

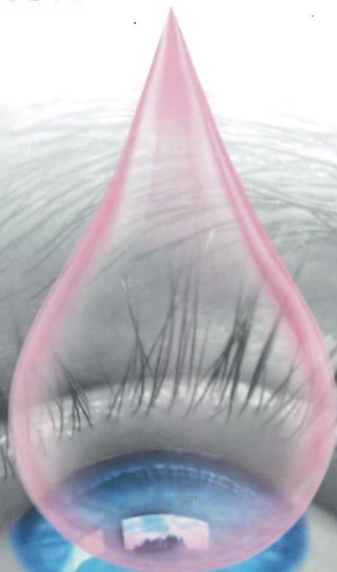
FOR RECURRENT DRY, TIRED AND IRRITATED EYES

Artelac® Rebalance

SUSTAINED
HYDRATION



NON BLURRING
VISION



FINALLY IN ONE DROP

 Artelac® Free your eyes

BAUSCH + LOMB

Artelac® Rebalance with Hyaluronic Acid and Viscoelactor™ (PEG 8000)

Unique and complementary properties of sustained hydration with non blurring vision ^{1,2}

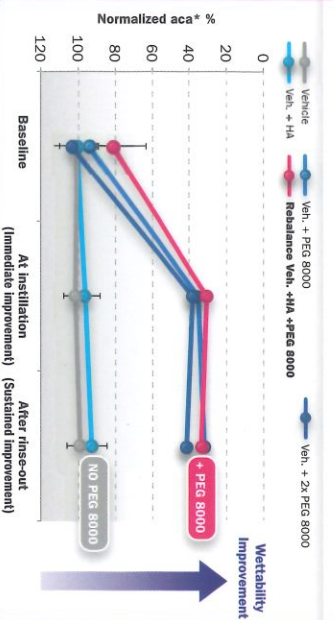
Sustained hydration



Non blurring vision



Artelac® Rebalance provides **superior wettability performance** compared to a formulation containing HA only. ¹



In vitro study

*ACA: Advancing Contact Angle. It quantifies the wettability of a given surface. The angle and the wettability are inversely proportional, i.e. lower angles are indicative of better wetting.



"I'm very/quite well satisfied about its capacity to be less blurring"



71 % Very/quite well satisfied
21 % Somewhat satisfied
9 % Slightly/Not satisfied

92% of dry eye sufferers confirm that Artelac® Rebalance produces **less blurring** than other eye drops and the majority (71%) are very or quite well satisfied. ²

Monadic parallel test
≈ leg of 300 people

High efficacy and reduction of discomfort symptoms



Artelac® Rebalance is considered **"very effective"** by approximately **90%** of dry eye sufferers.

A significantly higher number of dry eye sufferers rates Artelac® Rebalance as "very effective" when compared with other products. ²

Monadic parallel test
≈ leg of 300 people

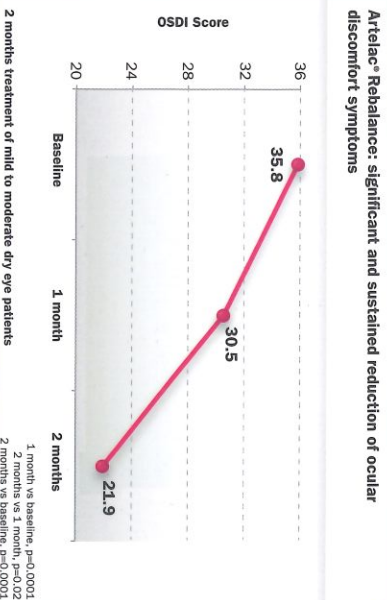


Artelac® Rebalance is "very effective"
(% of strongly/somewhat agree)



Artelac® Rebalance provided a progressive and statistically significant **reduction of discomfort symptoms** in all patients treated. ³

Clinical study on mild to moderate dry eye patients



Artelac® Rebalance: significant and sustained reduction of ocular discomfort symptoms

SUPERIOR PATIENT SATISFACTION

FOR RECURRENT DRY, TIRED AND IRRITATED EYES

Artelac® Rebalance

SUSTAINED HYDRATION + NON BLURRING VISION



**Hyaluronic acid 0.15% +
VISCOELACTOR™ (PEG 8000)**

Artelac® INSTANT RELIEF AND LASTING HYDRATION FOR MOST CAUSES OF DRY EYE



Artelac® Splash

**Fast and natural hydration
for dry eyes caused
by environmental factors.**



Artelac® Nighttime Gel

**Chronic dry, tired
and irritated eyes.**
Fast overnight relief
for patients with altered
tear layer.



Artelac® Lipids

**Extra protection
for dry eye patients
with altered lipid
tear layer.**

References

1. Davio S et al. Cell protective and "wettability" enhancing properties of Hyaluronic acid + PEG 8000 in an artificial tear product. Presented at ARVO 2013, Seattle, WA, May 9, 2013; Presentation #6000, Poster: A0063.
2. The importance of patient perception in the Dry Eye Syndrome. Science&Medicine 2013; 3(1):11-13.
3. Versura P, Profazio V, Giannaccare G et al. Eur J Ophthalmol. 2013 Mar 28. E pub ahead of print.

Artelac range falls under the Medical-device classification.

Artelac® Free your eyes

BAUSCH + LOMB